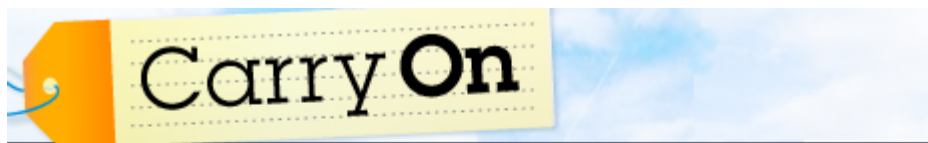


TRAVEL+ LEISURE

September 4, 2014



09.04.14

Backstage Beauty at Ann Yee SS15

By Katie James | [Style + Fashion, Beauty Road Test](#) | [Comments](#)



Climate change was the theme of [Ann Yee's](#) Spring/Summer 2015 collection—something that was on the minds of those who turned out for her presentation yesterday morning in 90-degree September weather. Prior to the show, the scene was cool, calm, and collected on the rooftop of midtown Manhattan's Refinery Hotel.



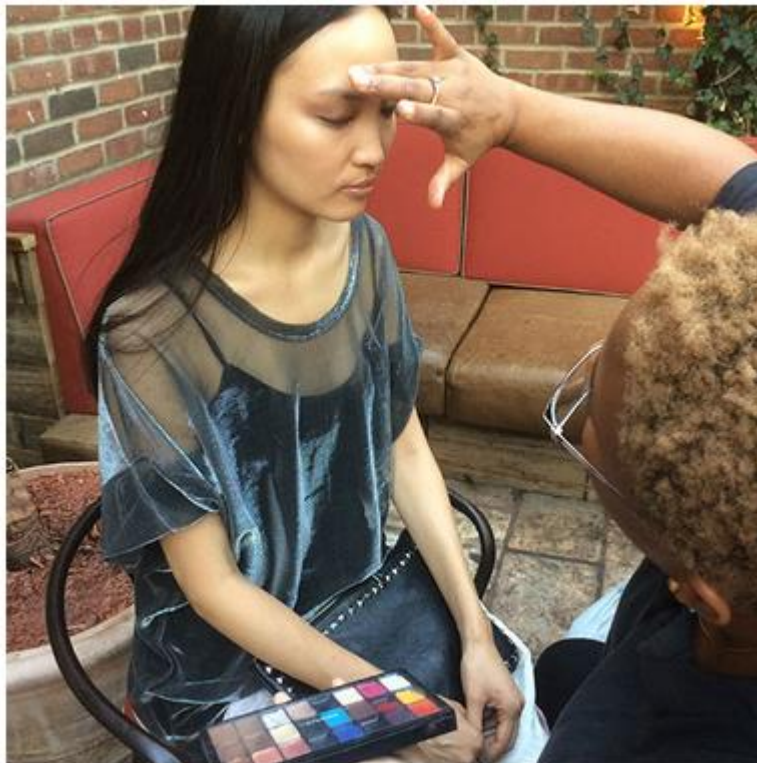
News from...

NJFPR
NANCY J. FRIEDMAN PUBLIC RELATIONS

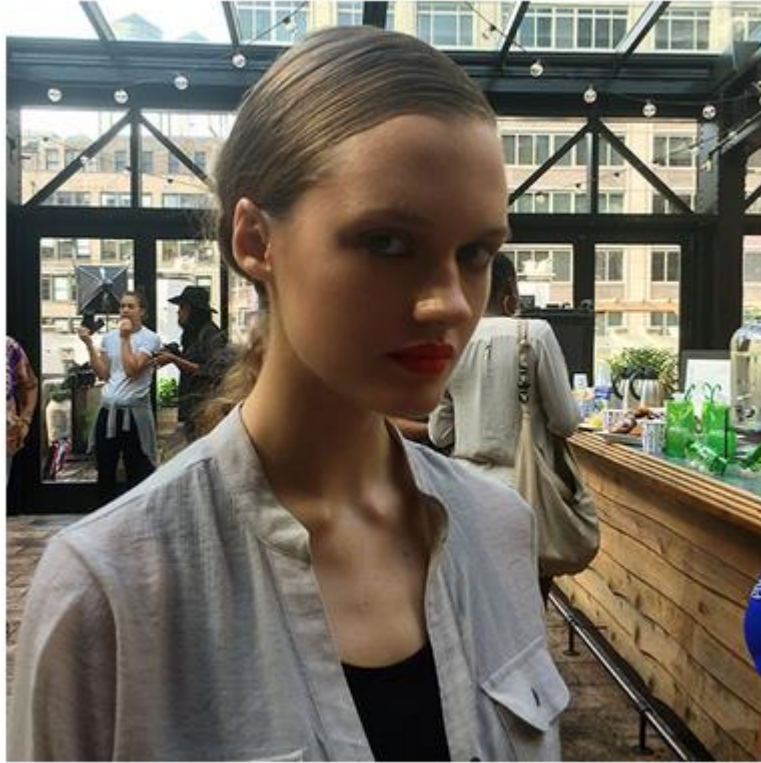
1,261,675 unique monthly
visitors



Aveda master stylist Jon Reyman found inspiration in Yee's versatile, layering knitwear—crafting a smooth, deep side-part in front that juxtaposed a pin-curl-waved pony in back. "I wanted to create something that was both modern and young—a wave with different textures. Not just the typical beachy waves, which for me are overdone," he said.



M.A.C. Pro Team Artist Fatima T. was also inspired by this global, seasonless look. "Nowadays, travel is so accessible," she said. "You can be in one climate one day, and in another part of the world the next. How do you adapt to that?" Blending two different looks was her answer: a diffused, taupe-based smoky eye with a fresh-looking orange lip lined in bold fuchsia.



For Yee, it's all about a wardrobe that adapts—to different climates, destinations, and styles—a versatility that was expertly translated into a look for today's globe-trotting woman.